

Exploring communication behaviors: Time-series study on newly designed neonatal intensive care unit


Sarah Julien-Bell, Lindsey Fay, Zahra Daneshvar, Shan Jiang, & Zahra Hajibabaei





Background






Many neonatal intensive care units (NICUs) have been moving towards single-family room (SFRs) due to associated positive health outcomes (Harris, Shepley, White, Kolberg, & Harrell, 2006).



Decentralized nursing stations positively contribute to the patient experience (Fay, Cai, & Real, 2019)



Among the healthcare professionals who work in the SFR-designed NICUs, research has demonstrated that individuals perceive decreased teamwork and greater isolation (Fay, Real, & Haynes, 2022).

Health Care Practitioner Activity Types

REPORT: REPORTING TO TEAM UPDATE ON PATIENTS. INCLUDES VITALS, GOALS, AND CARE STATUS DURING THE SHIFT. ALSO INCLUDES SHIFT REPORTS AND BREAK REPORTS.

Charting: Care assessments, reports, charts, and reviewing and clarifying orders. Includes time needed to fax orders, find paper charts, and communications related to clarify orders and medications.

Medications: Activities related to medication preparation.

Preparing: Planning, organizing, and scheduling of patient treatments, tests, and services. This activity may include consulting with team members of other staff either face to face or by phone. This activity will include the time spent to include physically locate team members, supplies, forms, or equipment.

Rounds: Room rounds made at shift change or during the shift not part of medication or patient request.

Admissions/Discharge: New patient admission or patient discharge activities, including administrative functions and communications.

Patient care: Patient care in the patient's room or hallway in close proximity to the patient's room, such as transport.

Other: Activities not related to direct or indirect patient care, such as social exchanges or information related to personal topics.

Reference: Gurascio-Howard and Malloch (2007)

Face-to-Face Communication Topics

COLLABORATION: PLANNING AND DECISION MAKING FOR PATIENT CARE INVOLVING THE INTERACTION AND INFORMATION SHARING OF AT LEAST TWO TEAM MEMBERS.

Consult: Asking for patient information or clarification on existing orders, medications, procedures, and diagnostics.

Leadership: Decision-making exchanges that involve identifying options, balancing risks, selecting options, and/or re-evaluating options.

Patient information: Providing information to another caregiver on patient status and care progress.

Coaching: Supporting existing team members' ability to develop care, planning, and coordination skills. Communication related to training of new employees or student nurses.

Coordination: Caregiver team members identifying and preparing for direct care needs such as equipment scheduling procedures, medication, locating the correct equipment for a particular case.

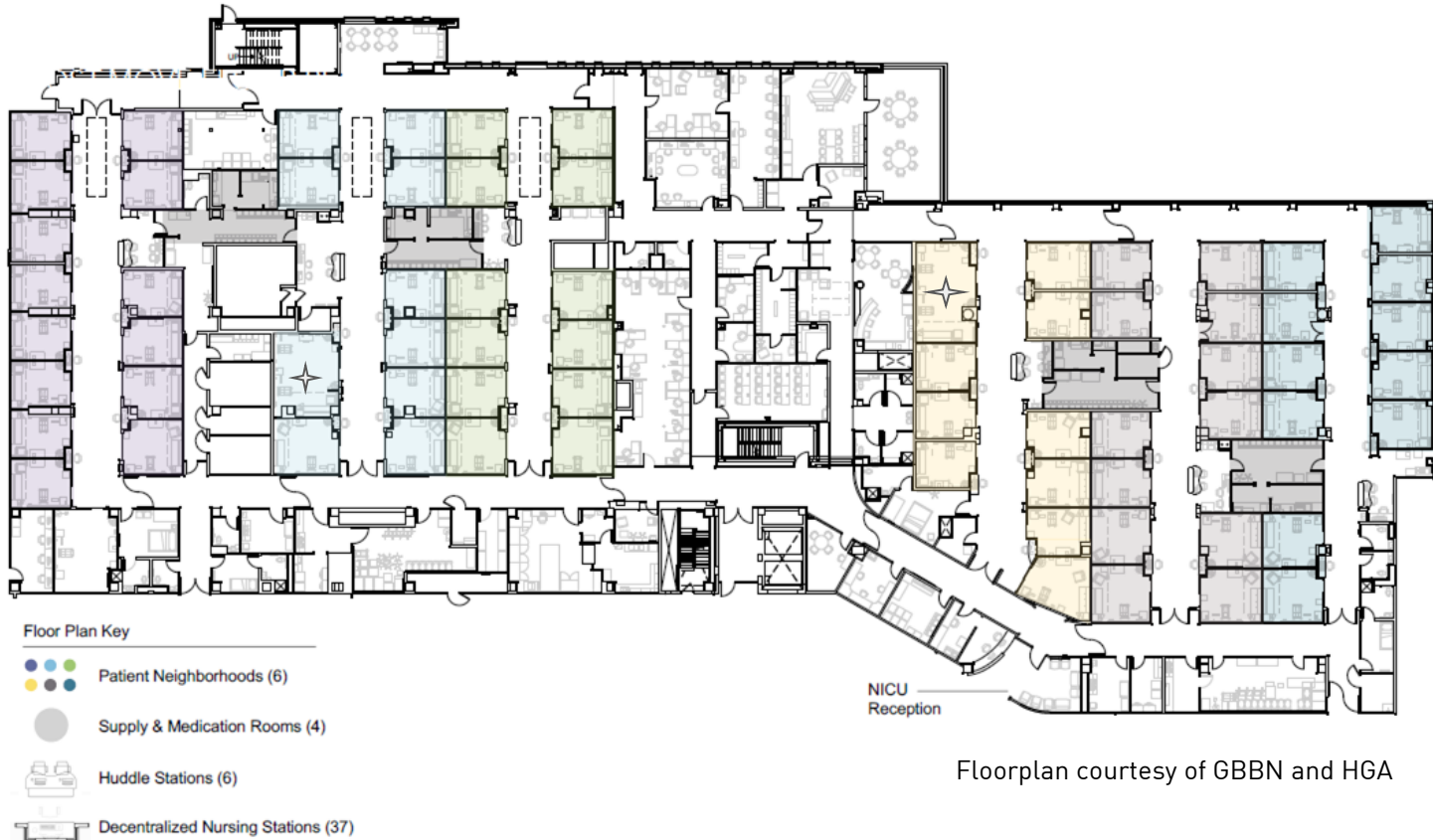
Informal Talk: Social interaction about non-work related issues or conversations such as, personal experiences and social exchanges.

Conflict: Work related conflict, such as drama, venting, and complaining

Reference: Gurascio-Howard and Malloch (2007)

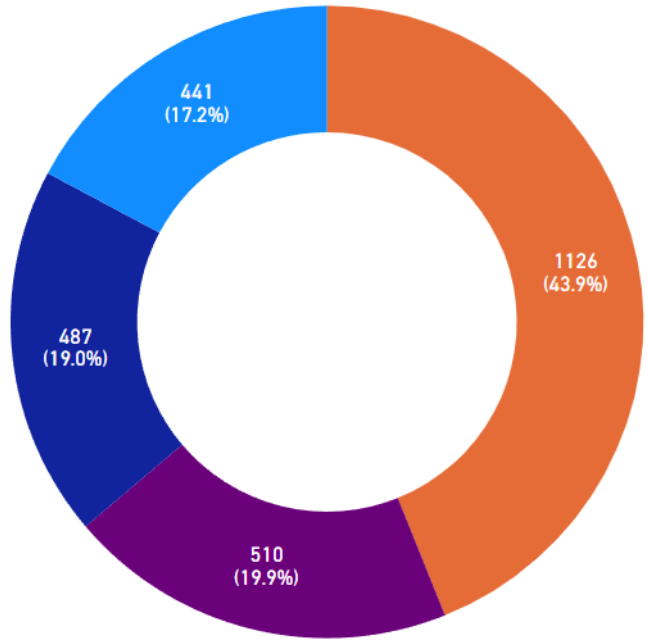


Method



Floorplan courtesy of GBBN and HGA

The NICU featured six 12-bed neighborhoods with decentralized nursing stations (DNS) for close patient monitoring during charting. Each neighborhood included a huddle station in the corridor's middle and a door leading to the supply room behind it.



Staff Role

- RN
- RT
- NCT
- MD



Data was collected by four observers and there were 60 unique providers observed for 90 minutes each: 29 nurses, 9 physicians, 10 respiratory therapists, and 12 NCTs resulting in 120 hours of data.



The researchers were trained to collect data using Quetech's WorkStudy+6 software.



The image displays two screenshots of the WorkStudy+6 software interface on an iPad. The left screenshot shows a menu titled "Face to Face" with the following categories: Collaboration, Consult, Leadership, Patient Information, Coaching, Coordination, Informal Talk, Conflict, and Other FTF. The right screenshot shows a menu titled "NICU_Phase2_Final" with the following categories: Huddle Station, Decentralized Station, Patient Room, Supply Room, Break Room, Corridor, Workroom, Other Location, Out of Unit, and Travel Time. Below the menu is a data table with columns for activity name, duration, and completion status.

Activity Name	Duration	Completion Status
Huddle Station: Charting: Non-Communication: Typing/Writing	1:06.70	100%
Huddle Station: Other Activity: Communication: Technology: Personal Device	0:48.65	100%
Huddle Station: Charting: Non-Communication: Typing/Writing	3:28.60	100%
Huddle Station: Other Activity: Communication: Technology: VOLT Phone	0:05.08	100%
Huddle Station: Charting: Non-Communication: Typing/Writing	1:43.96	100%

Level 1: Location

Huddle Station, Decentralized Station, Patient Room, Supply Room, Break Room, Corridor, Workroom, Other Location, Out of Unit, Travel Time

Level 2: Activity

Report, Charting, Medications, Planning, Locating, Interacting, Rounds, Admissions/Discharge, Patient Care, Other Activity

Level 3: Communication

Communication vs. Non-Communication

Level 4: Mode & Misc.

Technology, Face to Face, Other Non-Communication Reporting, Typing/Writing, Faxing, Searching for Information, Other Non-Communication Charting, Medication Preparation, Pharmacist Search, Other Non-Communication Medications, Organizing Supplies, Scheduling, Other Non-Communication Preparing, Looking for someone, Looking for supplies/forms/equipment, Other Non-Communication Locating, Other Non-Communication Interacting, Observing, Other Non-Communication Rounds, Other Non-Communication Admissions/Discharge, Basic Infant Care, Minor Procedures, Other Non-Communication Patient Care, Personal Media Use, Bathroom, Break, Other Non-Communication Other

Level 5: Technology Type/Communication Context

Personal Device Texting, VOLT Phone Texting, Personal Device Call, VOLT Phone Call, Desktop Phone Call, Desktop Computer, Cow-Cart Computer, Tablet, Laptop, Other Technology, Collaboration, Consult, Leadership, Patient Information, Coaching, Coordination, Informal Talk, Conflict, Other FTF



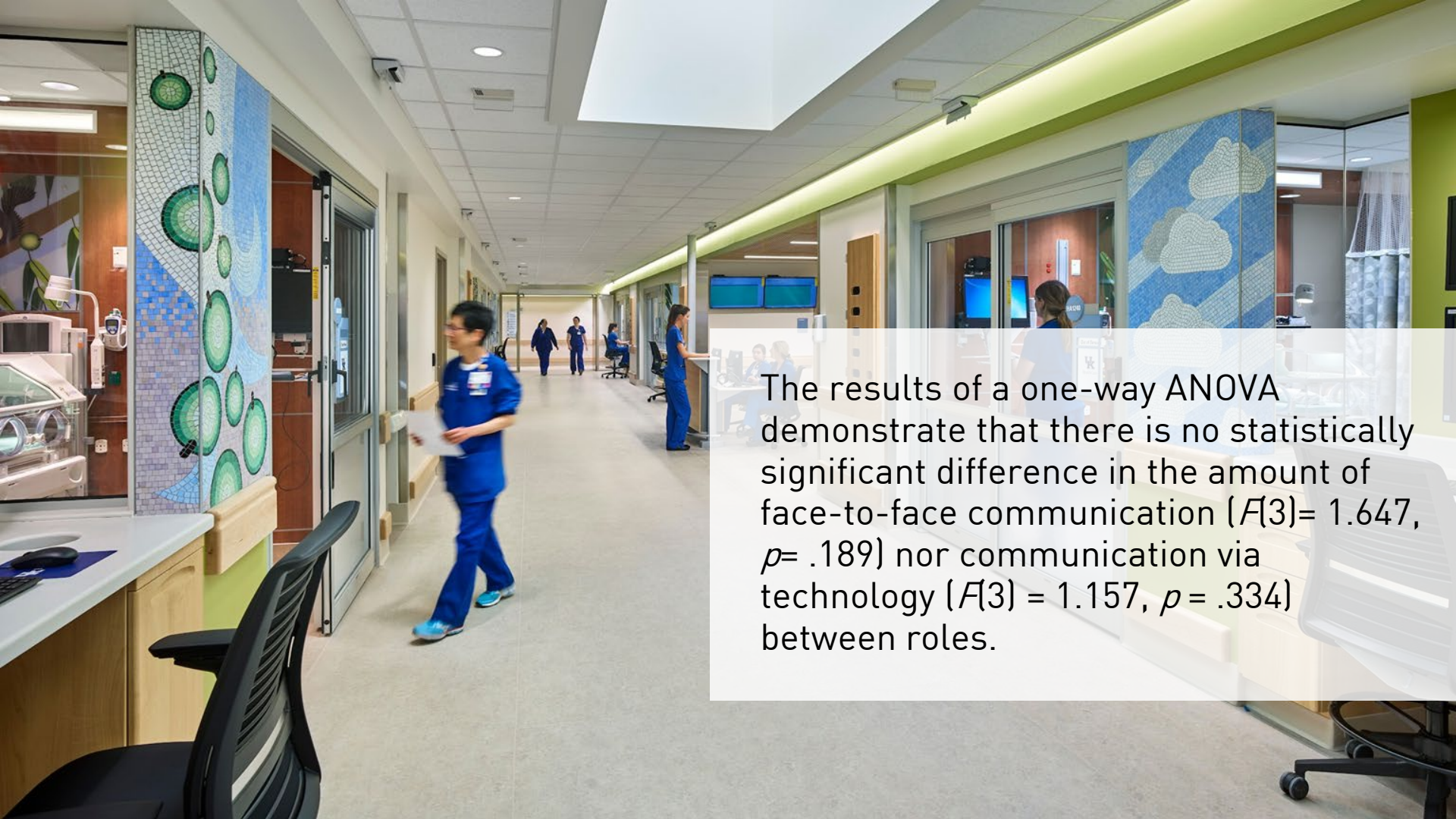
Findings



Across all healthcare providers observed, face-to-face communication occurred for an average of 31.5 out of 90 minutes (SD= 16.9).



Communication via technology occurred for an average of 7 minutes (SD= 7.98).



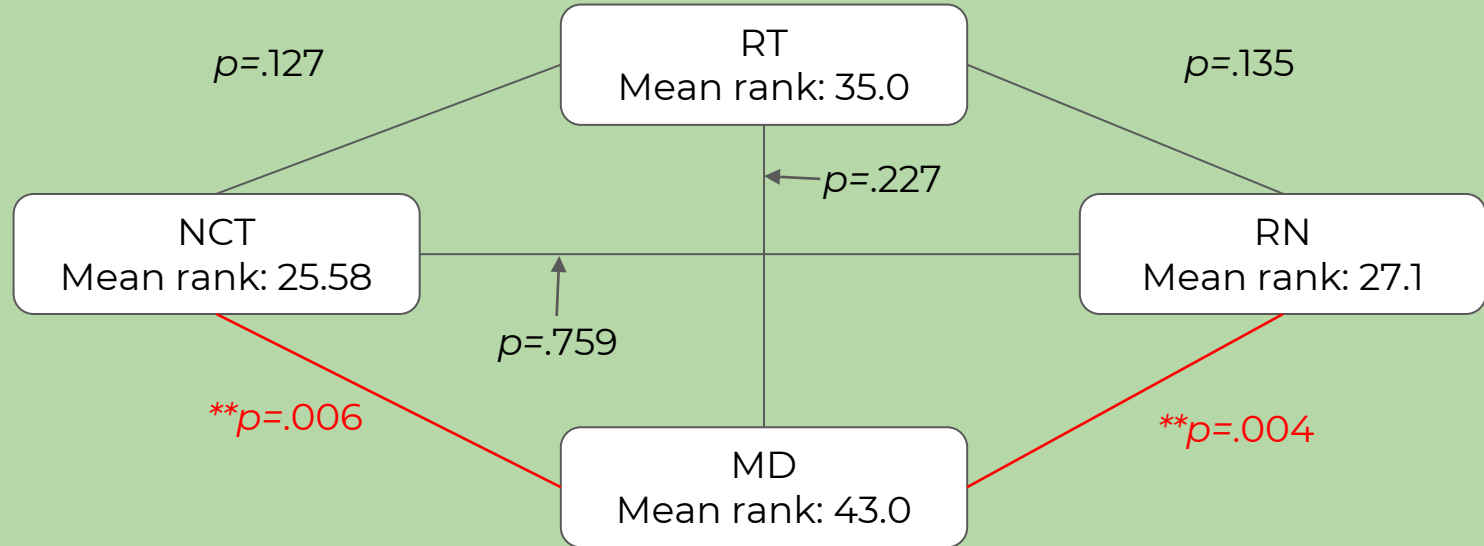
The results of a one-way ANOVA demonstrate that there is no statistically significant difference in the amount of face-to-face communication ($F(3) = 1.647$, $p = .189$) nor communication via technology ($F(3) = 1.157$, $p = .334$) between roles.

Kruskal-Wallis Test Results

Topic	<i>H</i>	<i>p</i> -value
Coaching	7.26	.064
Collaboration	5.61	.132
Conflict	1.21	.752
Consult	7.72	.052
Coordination	10.75	.013*
Informal Talk	12.69	.005**
Leadership	2.14	.545
Patient Information	9.48	.024*
Other	5.67	.129

Note. degrees of freedom is equal to 3 for all tests
* $<.05$, ** $<.01$, *** $<.001$

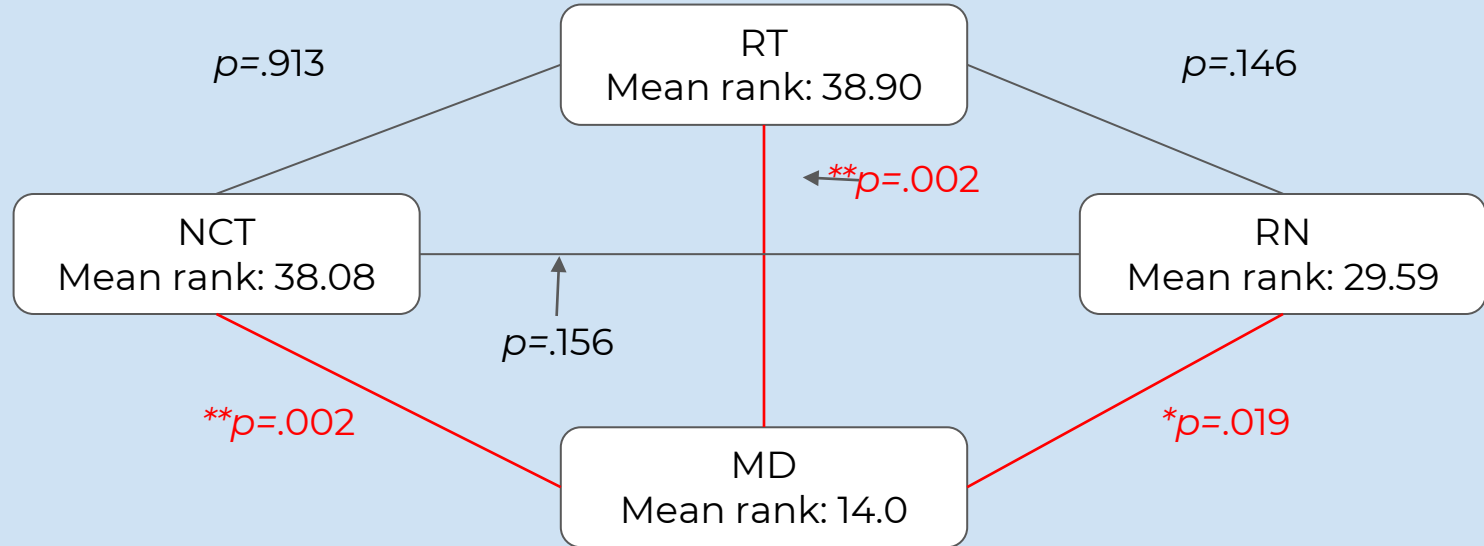
Pairwise Comparison–Coordination



Notes:

* $<.05$, ** $<.01$, *** $<.001$

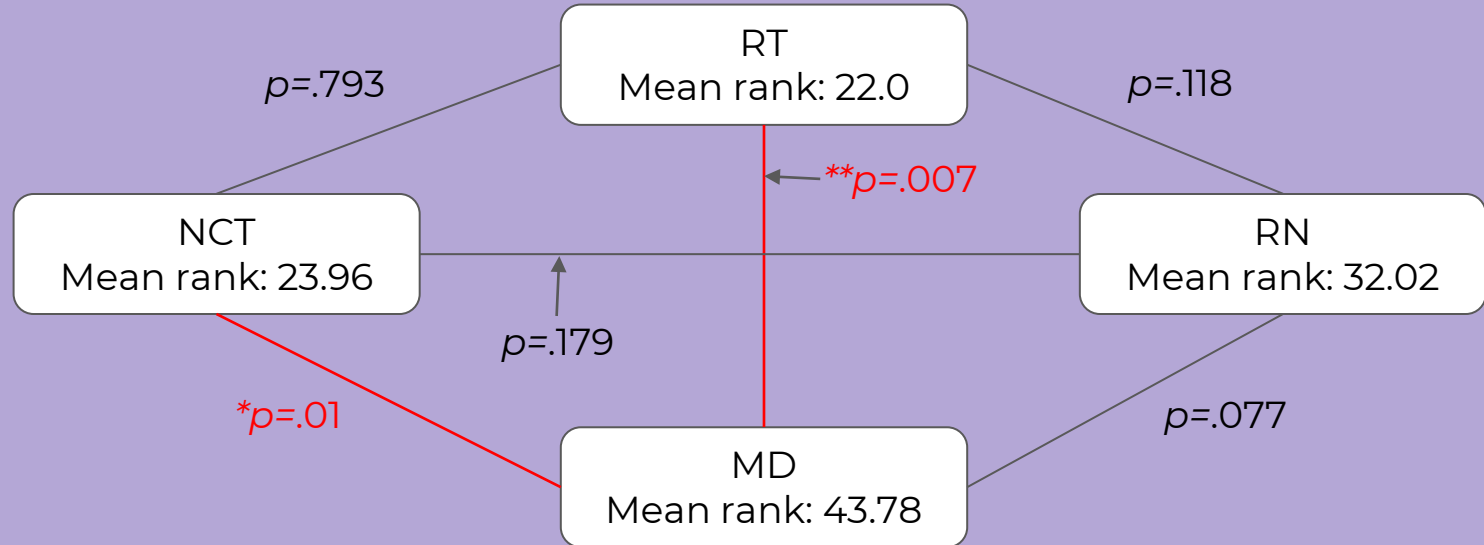
Pairwise Comparison–Informal Talk



Notes:

* $<.05$, ** $<.01$, *** $<.001$

Pairwise Comparison–Patient Information



Notes:

* $<.05$, ** $<.01$, *** $<.001$



Conclusion





The exploratory analysis reveals that face-to-face communication remains the primary mode of communication among healthcare providers.

Nurses, Respiratory Therapists, and Nursing Care Technicians spend more time engaging in informal talk.



The background of the slide is a mosaic. The top and bottom sections are a vibrant blue with small square tiles. In the top section, there is a dark blue fish on the left and a large, stylized brown fish with vertical stripes on the right. In the bottom section, there is a dark blue fish on the right and a large, stylized brown fish with vertical stripes on the left. The central section is a light blue gradient with a large, faint, semi-transparent brown fish with vertical stripes in the background.

Acknowledgements

The study site (UKHC NICU) is designed by GBBN in collaboration with HGA
Data collection was facilitated by Shannon Haynes, Patient Care Manager at UKHC
Images in the presentation © Halkin Mason Photography

References

- Fay, L., Cai, H., & Real, K. (2018). A systematic literature review of empirical studies on decentralized nursing stations. *HERD: Health Environments Research & Design Journal*, 12(1), 44-68.
- Fay, L., Real, K., & Haynes, S. (2022). The healthcare workspace: understanding the role of decentralized nursing stations, corridors, and huddle spaces as locations for teamwork in a neonatal intensive care unit. *HERD: Health Environments Research & Design Journal*, 15(4), 270-282.
- Gurascio-Howard, L., & Malloch, K. (2007). Centralized and decentralized nurse station design: An examination of caregiver communication, work activities, and technology. *HERD: Health Environments Research & Design Journal*, 1(1), 44-57.
- Harris, D. D., Shepley, M. M., White, R. D., Kolberg, K. J. S., & Harrell, J. W. (2006). The impact of single family room design on patients and caregivers: executive summary. *Journal of Perinatology*, 26, S38-S48.