

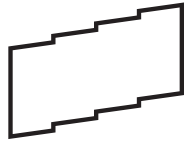


TOGETHER, WE

ENHANCE EXPERIENCE & EMPOWER PEOPLE

THE CULTURE OF HEALING





PEOPLE CHOOSE DOCTORS, NOT BUILDINGS.

But when people come through your doors, what they experience impacts how they feel when they're in your hands.

We do our best work with ambitious leaders in health, who want to design an experience that patients seek out over a lifetime; and one that attracts and retains the best talent. Rooted in evidence-based design, we combine creative design thinking with research, technology, energy modeling, and modular and prefabrication techniques to help you create healthy, sustainable, efficient environments that uplift your patients and professionals.

Positively affecting people, from your patients to your professionals, is the most important thing we do.





CONTENTS

AMBULATORY CARE.....	07
EMERGENCY DEPARTMENTS	13
CRITICAL CARE	19
INPATIENT	25
SURGERY	29
CANCER CARE	35
PLANNING.....	39
PLACES FOR RESPITE	45



AMBULATORY CARE



TriHealth FINNEYTOWN



TriHealth THOMAS COMPREHENSIVE CARE CENTER

AMBULATORY CARE

A cohesive experience—across multiple buildings and locations or in telehealth consultations—helps reinforce your values and express your distinctive brand, no matter how people engage with it.

We combine Evidence Based Design, Lean principles, research, simulation, augmented reality, prefabrication techniques and other technological advances to make the design and construction process more efficient. Our development of a new system of modular clinical prototypes helps clients adapt their facilities to specific site, staff, and patient needs; the prototypes can also be configured at various scales from large, regional medical centers to community and neighborhood clinics.

Staying ahead of research and trends in healthcare helps our clients get the most out of their facilities. Our practice includes experts in research, sustainability, and digital fabrication and regular community engagement and educational initiatives like our Oncology Symposium and Health Equity Symposium.

HIGHLIGHTED PROJECTS



Cincinnati Children's Eastgate
Cincinnati, Oh
Full Architectural Services
110,000 SF



Norton Healthcare Novak Center for Children's Health
Louisville, Ky
Exterior Lead Design & Medical Planning
174,000 SF
Collaborated with EYP



TriHealth Good Samaritan Western Ridge
Cincinnati, Oh
Full Architectural Services
92,000 SF



Bon Secours Simpsonville Medical Center
Simpsonville, Sc
Full Architectural Services
53,000 SF



TriHealth Liberty Ambulatory Center
Montgomery, Oh
Full Architectural Services
50,000 SF



Mercy Health Deerfield
Cincinnati, Oh
Full Architectural Services
55,000 SF



BON SECOURS SIMPSONVILLE

TRIPLETH WESTERN RIDGE

AMBULATORY EXPERIENCE

Bon Secours Mercy Health

- Mercy Rookwood Medical Center*
- Mercy Deerfield Medical Center
- Mercy Kings Mills MOB
- Bon Secours Simpsonville
- Bon Secours Chester
- Bon Secours Millennium ASC Study
- Bon Secours Ashland

CHRISTUS St. Vincent

- Cancer Center

The Urology Group

- Ambulatory Surgery Center
- The Urology Center

Allegheny Health Network

- Westmoreland MOB

UC Health Physicians

- Florence MOB
- Midtown MOB
- Primary Care Prototype
- University Pointe

St. Elizabeth Healthcare

- North Unit MOB
- MOB III

TriHealth

- Good Samaritan Hospital MOB
- Kenwood MOB
- Anderson MOB
- West Chester MOB
- Western Ridge MOB
- Anderson Surgery Center Exterior Design
- Thomas Comprehensive Care
- Liberty Township MOB
- Butler County MOB
- FinneyTown MOB

Norton Healthcare

- Audubon Heart & Vascular
- Prevention and Wellness Center Masterplan
- Springs Heart Specialty Clinic

UC Health Physicians

- Over 35 Outpatient Clinics
- Lindner Center of HOPE Accelerator

Cincinnati Children's

- Over 35 Outpatient Clinics
- Eastgate MOB and OSC
- Union Township MOB
- Liberty Township*
- Centerville MOB
- Winslow MOB
- Crestview Hills MOB

The Christ Hospital Health Network

- Green Township Outpatient Center
- Montgomery Surgery Center
- Montgomery Outpatient Center
- Liberty Township Outpatient Center*
- Green Township Bldg II Site Planning
- Ft. Mitchell Outpatient Campus Study

Norton Healthcare

- Novak Center for Children's Health*

Bugshan Investment

- Saudi Arabia Clinics & Day Surgery

PUBLICATIONS & PRESENTATIONS



Campus Configuration and Building Approach Design on Patient Arrival and Spatial Navigation at Large Hospitals

EDRA Conference

» Shan Jiang



Prototyping 2.0: On-Site Prefabrication Minimizes Risk, Speeds Delivery

PDC Summit

» Mickey LeRoy



Improving our Environment: Exploring the Design/Health Axis

Symposium on Design and Health, Practice, Research, and Social Relevance

» Angela Mazzi



Health Equity Symposium

How Can a Health System be a Health Equity Anchor?

» Angela Mazzi

Working Towards Health Equity

» Shan Jiang



Improving Healthcare Resilience Through an Equity Focused Framework

AIA/ACSA Intersections Research Conference:

Resilient Futures

» Tiffany Broyles Yost, Greg Coni, Angela Mazzi

New Strategy, New Journey, New Vision

China Hospital Construction & Development

Conference and Exhibition

» Jerry Zhu

10 Essential Design Components Your Facilities Should Include to Attract & Retain Staff

ACHE Annual Congress,

» Angela Mazzi

Leveraging Technology for Better Design

Medhealth Outlook

» Troy Malmstrom, Angela Mazzi, Steph Shroyer



A

B

C

EMERGENCY DEPT.



BON SECOURS MERCY HEALTH CHESTER

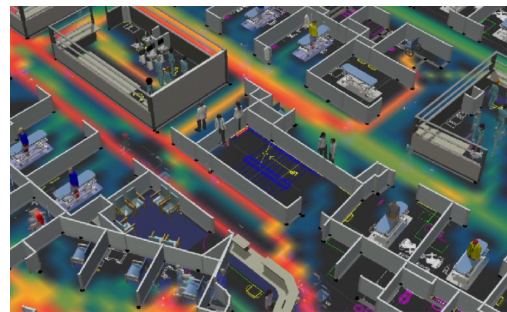


MERCY HEALTH FREESTANDING ED

EMERGENCY DEPARTMENT (ED)

Planning for the volume fluctuations experienced by emergency departments means more patients get timely treatment.

We use gemba walks, observation, and simulation modeling software to map the detailed steps of medical processes that take place within a space—including patient and staff paths, the duration of procedures, and equipment used—to build an independent model that can show how the space operates under different levels of demand. We use these tools to demonstrate how and when backups occur, and how design can help disentangle the symptoms of delays from their causes.



Patient and staff simulation for TriHealth ED.

HIGHLIGHTED PROJECTS



Bon Secours Chester
Chester, Va
Full Architectural Services
24,000 SF



Bon Secours Simpsonville
Simpsonville, Sc
Full Architectural Services
53,000 SF



UK HealthCare Level 1 ED Expansion
Lexington, Ky
Full Architectural Services
7,000 SF



TriHealth Good Samaritan Hospital ED
Cincinnati, Oh
Full Architectural Services
33,000 SF



TriHealth Bethesda North ED
Cincinnati, Oh
Full Architectural Services
50,000 SF



Hardin Memorial ED
Elizabethtown, Ky
Designer of Record
32,000 SF



TriHealth GOOD SAMARITAN



HARDIN MEMORIAL EMERGENCY DEPARTMENT

ED EXPERIENCE

Children's Hospital of Pittsburgh
ED Expansion

UK HealthCare

- Patient Care Facility ED**
- Pediatric ED**

The Christ Hospital Health Network
ED Renovation

St. Claire Regional Medical Center
ED Renovation

Mercy Health**
Rookwood Freestanding ED

Cincinnati Children's
ED Renovation

Cleveland Clinic - Hillcrest Hospital*
ED & Pediatric ED Renovation & Expansion

Cleveland Clinic - Euclid Hospital*
ED Expansion & Renovation

Cleveland Clinic - Twinsburg*
ED

Mercy Health Fairfield Hospital
ED Level II Trauma Center

TriHealth
Good Samaritan ED Renovation
Bethesda North ED Renovation
Liberty Urgent Care

St. Elizabeth Healthcare
Grant ED Expansion

Margaret Mary Health
ED

Bon Secours Mercy Health
Kings Mills ED
Simpsonville ED
Chester ED

Mercy Health WI
ED

ED PUBLICATIONS & PRESENTATIONS



Optimize Your High Volume ED
Healthcare Design
» Jason Groneck



UPMC ED Case Study: ED Design: A Practical Guide to Planning for the Future
» Angela Mazzi
The editor of this book chose to feature our project as a case study as exemplary planning and design of their emergency department.

ED Design Consideration - Two Different Approaches to Workflow
Healthcare Facilities
» Benjamin Earls

Healthcare's New Normal:
Employing Cognitive Research to Create Patient-Centered Solutions, ASHE PDC Conference
» Angela Mazzi
Angela's presentation focuses on salutogenesis and other cognitive research to provide evidence-based solutions that promote well-being. Part of the Through the Patient's Eyes Series.

*Completed by GBBN team member while employed by another firm.

**Collaborated with additional firm





NEONATAL INTENSIVE CARE UNITS (NICU)

Our NICU designs combine expertise and empathy.

We understand the nature of the NICU's highly specialized care as well as the physical and emotional highs and lows that families and staff experience in this emotionally intense environment. Controlling light, temperature, and noise around vulnerable premature babies is critical to their survival.

Equally important is the balance of privacy and proximity: Rooms private enough for parents to stay close yet accessible enough for nurses to get there in a heartbeat. Decibels and lighting degrees; patient rooms arrayed into manageable neighborhoods for staff coverage; family support and respite spaces, intuitive wayfinding, and security considerations all come into play in the NICU environment.

HIGHLIGHTED PROJECTS



Cincinnati Children's NICU
Cincinnati, Oh
Medical Planning & Full Architectural Services
28,000 SF Renovation*



TriHealth Good Samaritan NICU
Cincinnati, Oh
Medical Planning
Full Architectural Services
28,000 SF Renovation



UK HealthCare* NICU
Lexington, Ky
Medical Planning & AOR
39,000 SF Renovation
Collaborated with HGA Architects, Inc.



Children's Hospital of Philadelphia NICU Renovation
Philadelphia, Pa
Programming, Design, CDs, CA
39,900 SF Renovation

**Collaborated with additional firm*



UK HEALTHCARE 12TH FLOOR ICU



UPMC SHADYSIDE ICU

ICU

Critical care environments are complex. More resources—from specialist physicians and nurses to medical equipment—need to come to the patient. Lighting and acoustics require careful consideration. Thanks to advances like portable ventilators, patients may spend less time in bed and more time moving about, often accompanied by family who want to remain by their loved one’s side.

The use of Augmented Reality (AR) allows us to enhance an existing, real-world environment with an overlay of digital information that allows clients to see the digital and the real at the same time and better understand how different design elements will appear within the actual space. An intuitive, easy to understand mode of communicating, AR can bridge the interpretive gap, enabling the project team to gather better feedback, resolve construction and maintenance issues before they happen, and save our clients’ money. From quick iterations and testing to better collaboration, construction and communication, AR models are changing the way healthcare facilities are designed and are opening a new world of design possibilities.



Virtual walk through of UK HealthCare’s 12th floor

EXPERIENCE

UK HealthCare
Patient Care Facility ICUs**

TriHealth Good Samaritan Hospital
ICU 7A Renovation

TriHealth Good Samaritan Hospital
ICU 7B Renovation

TriHealth Good Samaritan Hospital
Neuro ICU

TriHealth Good Samaritan Hospital
Cardiac ICU

TriHealth Good Samaritan Hospital
NICU

UPMC Mercy
ICU Study

TriHealth Bethesda North Hospital
NICU

Mercy Health Fairfield Hospital
NICU

Cincinnati Children’s
NICU

Cincinnati Children’s
CICU

Cincinnati Children’s
PICU

St. Elizabeth
SICU

**Collaborated with additional firm



MERCYHEALTH

5440

5470

MAIN ENTRANCE

VISITOR
PARKING
5440 Kings Island Dr.
P

INPATIENT



UPMC MERCY SHADYSIDE



BON SECOURS MERCY HEALTH CHAMPION

INPATIENT

Whether 24 beds or 600, planning inpatient facilities requires the tools, expertise, and resources to both design new buildings from the ground up and find new ways to leverage space within existing systems. From community hospitals to regional health systems spanning multiple campuses, we work with clients on renovations and new construction that express their brand and promote their quality of care.

We embrace collaboration and coordination early in the design process to optimize patient flow and operational efficiency. We use Augmented Reality to help medical staff feel what spaces will be like and give real time feedback and we continually build on our archive of research to create positive experiences for patients, families, and staff. We use prototyping, prefabrication, and on-site fabrication to help speed new facilities to market by improving labor utilization rates and reducing safety incidents during construction.

HIGHLIGHTED PROJECTS



Bon Secours Mercy Health Kings Mills
Cincinnati, Oh
Medical Planning &
Full Architectural Services
172,000 SF



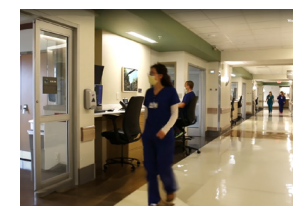
TriHealth Bethesda North
Cincinnati, Oh
Medical Planning
Full Architectural Services
120,000 SF Addition and
Renovation



Margaret Mary Health
Batesville, In
Medical Planning
Full Architectural Services
125,000 SF



TriHealth Good Samaritan
Cincinnati, Oh
Medical Planning
Full Architectural Services



UK Healthcare
5th Floor Neuroscience
Lexington, Ky
Full Architectural Services
67,000 SF Renovation



Bon Secours Mercy Health Confidential Location
Medical Planning
Full Architectural Services
531,000 SF





TriHealth BETHESDA NORTH



UK HEALTHCARE INTERVENTIONAL SERVICES

SURGERY

Getting ORs right is as critical as the surgeries performed within them. From the world's first pediatric hybrid OR at Cincinnati Children's, the nation's #1 pediatric medical center, to specialty and hybrid ORs across multiple systems, we work with leaders in healthcare to craft operating rooms that are flexible, efficient, and optimized.

We understand the complexity of surgical environments— the flows, the codes, the equipment, circulation, turnover, safety, and the technological advances impacting the future of surgery—and deploy tools like full-size mockups and AR, close collaboration with surgical teams, and our established relationships with specialty consultants and equipment manufacturers— to design optimum spaces

HIGHLIGHTED PROJECTS



Cincinnati Children's Surgery Masterplan & Phased Implementation
Cincinnati, Oh
Full Architectural Services



The Urology Group Surgery Center
Cincinnati, Oh
Full Architectural Services



UK HealthCare Surgery Suite
Lexington, Ky
Full Architectural Services
Collaborated with HGA



Bon Secours Mercy Health Kings Mills
Cincinnati, Oh
Full Architectural Services



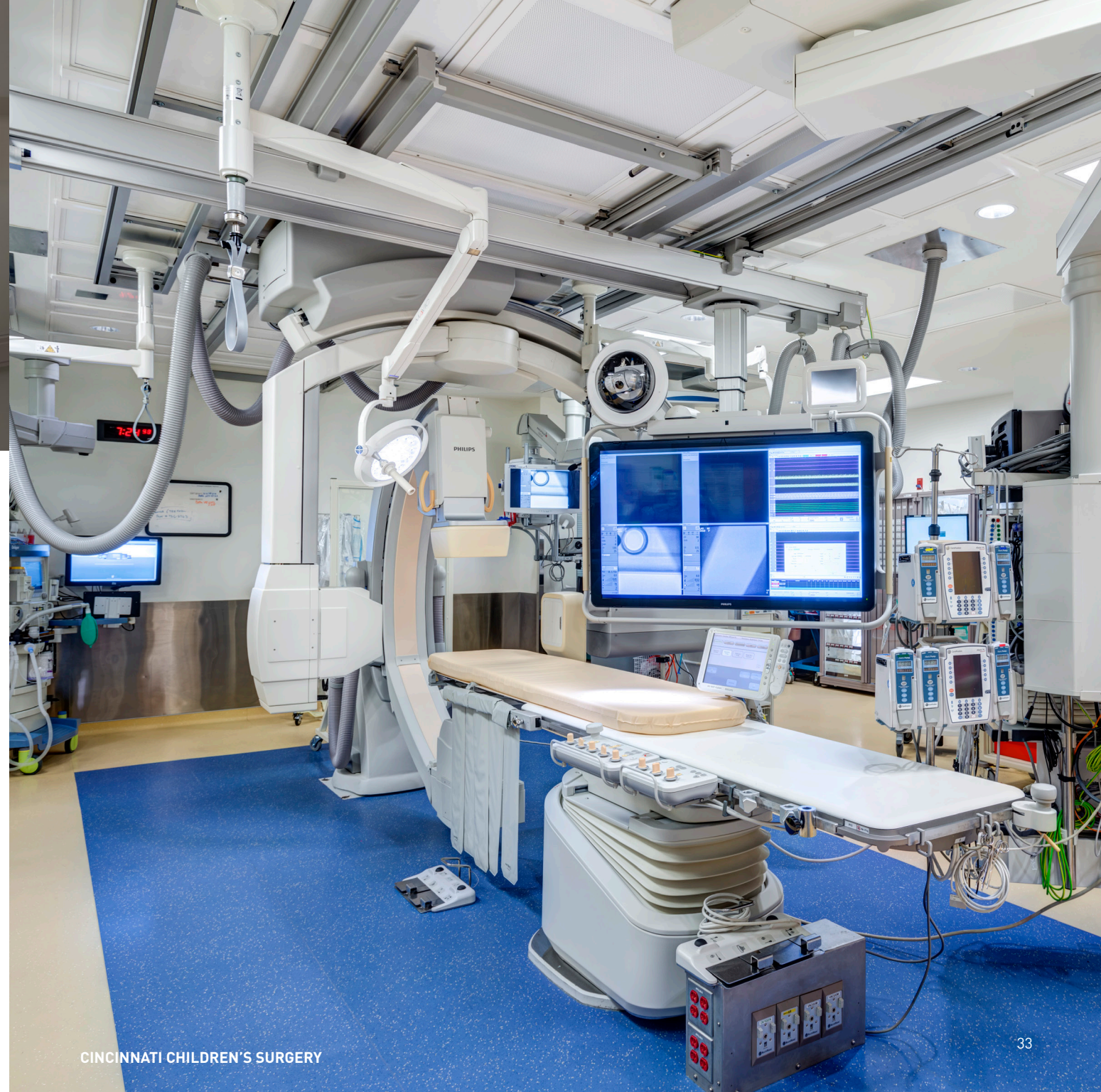
The Christ Hospital Montgomery Surgery Center
Montgomery, Oh
Full Architectural Services



TriHealth Good Samaritan Surgery Suite
Montgomery, Oh
Full Architectural Services



ST. ELIZABETH FORT THOMAS



CINCINNATI CHILDREN'S SURGERY

EXPERIENCE

We have experience in the following surgery typologies

- ORTHO
- HEART
- UROLOGY/GYNECOLOGY
- ENDOSCOPY
- CYSTOLOGY
- NEURO
- EAR, NOSE, THROAT
- EYE
- C-SECTION
- TRANSPLANT
- FETAL
- HYBRID

Cincinnati Children's
Surgery, Masterplan
& Implementation

Nationwide Children's
Surgery Masterplan

The Christ Hospital Health Network
Montgomery Surgery Center

The Christ Hospital Health Network**
Liberty Surgery Center

The Christ Hospital Health Network
Ft. Mitchell Surgery Center Study

The Christ Hospital Health Network
Green Township
Outpatient Center w/ Surgery

The Christ Hospital Health Network
Redbank Surgery Center

UK HealthCare**
Surgery Suite

St. Elizabeth Healthcare
Surgery Renovations

The Urology Group
Surgery Center

TriHealth
Over 10 Surgery Projects

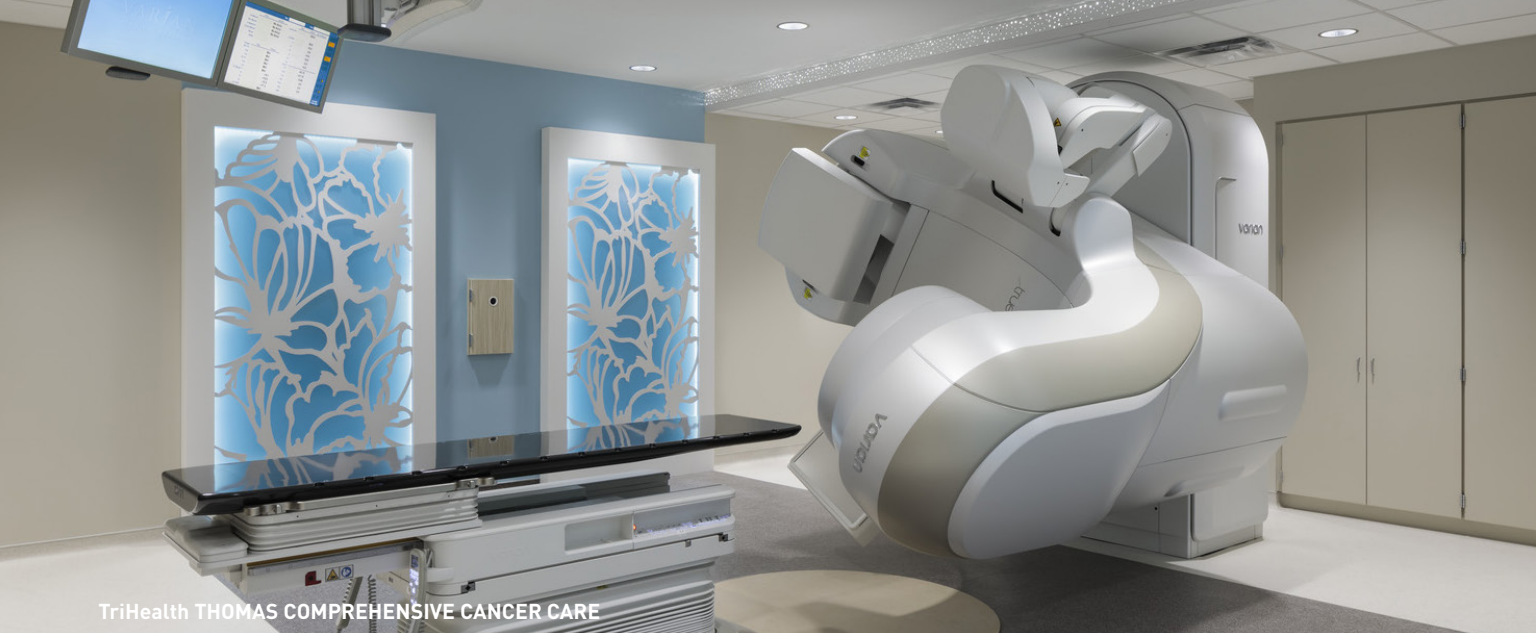
Mayfield Clinic & Spine Institute
Surgery Center

Cleveland Clinic, Hillcrest Hospital*
Surgery Center

Salem Community Hospital*
Surgery Center

* Work performed by team member while with another firm.
**Collaborated with additional firm





TriHealth THOMAS COMPREHENSIVE CANCER CARE



TriHealth THOMAS COMPREHENSIVE CANCER CARE

CANCER CARE

Cancer care is undergoing fundamental shifts.

The Centers for Disease Control (CDC) expect the number of cancer cases to grow by 20% in the coming decade. The approach to care is also changing, with treatment moving out of departmental silos towards an ever-expanding and more integrated spectrum of care that offers everything from diagnostic screenings to symptom management, palliative care, and survivorship.

Managing this evolution takes more than co-locating services. Evolving treatment protocols (including telehealth) and elements such as urgent care, imaging, lab, genetics, nutrition and behavioral health are joining the usual program of clinics, infusion and radiation oncology. Supportive components like pharmacy, social services and financial counseling take on an expanded and decentralized role to prioritize convenient access and patient empowerment.

We take 100% of our cancer care projects through an Evidence Based Design process. Our lead researchers conduct primary and secondary research on the unique demands of cancer care and work with our full healthcare market to formulate design strategies to meet these challenges.

EXPERIENCE

The Christ Hospital Health Network
Montgomery Cancer Center

CHRISTUS St. Vincent
Cancer Center

Cincinnati Children's
Cancer & Blood Disease Institute

McCullough Hyde Memorial
Outpatient Oncology Center

Norton Healthcare
Master Plan Study

TriHealth Cancer Institute

- Thomas Center
- Butler
- Western Ridge
- Kenwood
- Good Samaritan

St. Elizabeth Healthcare
Edgewood Cancer Care

UC Health Physicians
Precision Radiotherapy
& Linear Accelerator Expansion

UC Health Medical Center

- UC Barrett Cancer Clinic Renovation
- UC Barrett Cancer Center Masterplan

UK HealthCare

Markey Cancer Center Inpatient Floor
Fitout

Norton Children's

Novak Center for Children's Health
Collaborated with EYP

PUBLICATIONS/PRESENTATIONS

ASHE Oncology Evolution: Planning for
the future of Cancer Care Facilities
ASHE Health Facilities Management
Angela Mazzi



GBBN's
Oncology Symposium
Angela Mazzi, Michael Lied



Leveraging
Land + Light
Kristin Greeley





PLANNING

Growing a health system can feel like a game of chess.

Whether you're growing within constraints of tight urban environments; evolving with a growing community or functioning as its central hub, every move requires anticipating dozens of opportunities and challenges. Often, the precise way forward—for the next 5, 10, or 20 years—isn't always clear.

Clients turn to us to help them envision their futures—be it city, suburb, or rural—and use research, data, planning and design to get them there. Whether you're inserting a benchmark program into an existing hospital, shelling space for future use, or anticipating new service lines, we help surface the correct challenge to solve before developing the solution.

HIGHLIGHTED PROJECTS



**Norton Healthcare
Novak Center
Building Planning**
Louisville, Ky



**Bon Secours Mercy Health
Masterplanning**
Cincinnati, Oh



**Cincinnati Children's
Masterplanning**
Cincinnati, Oh



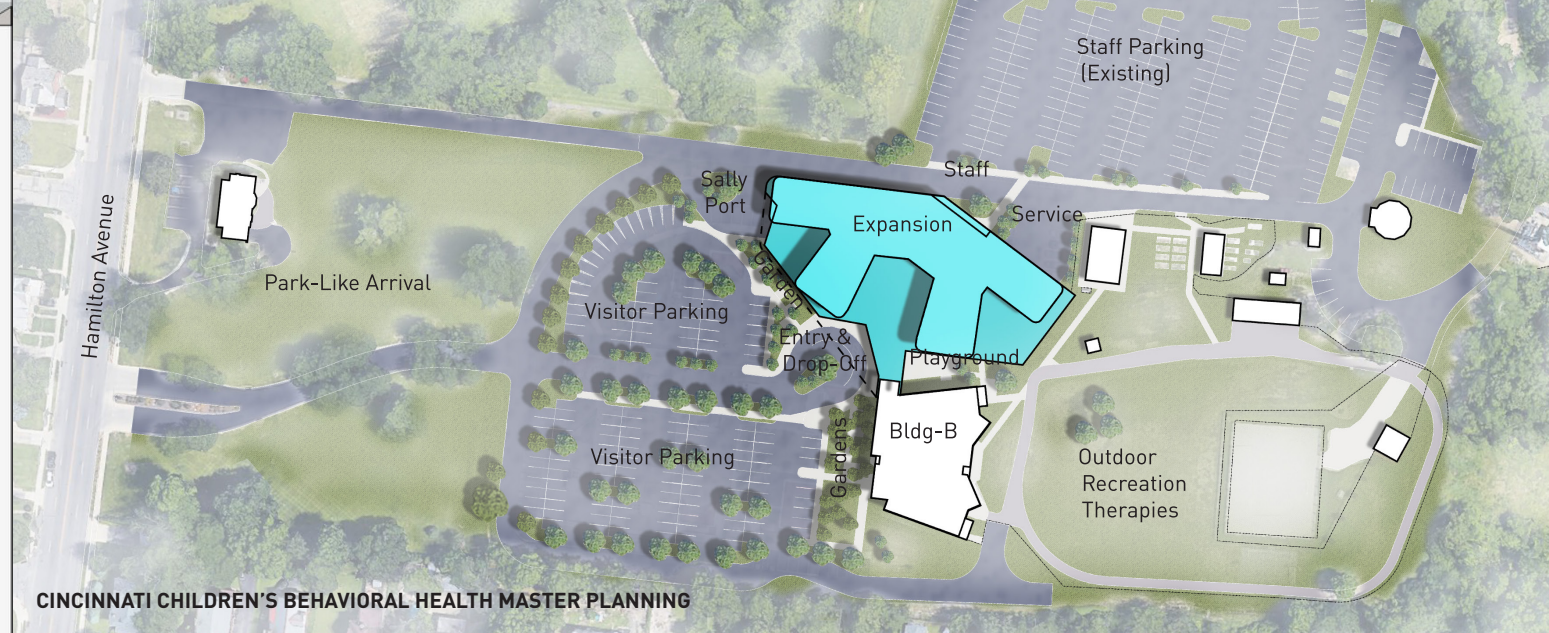
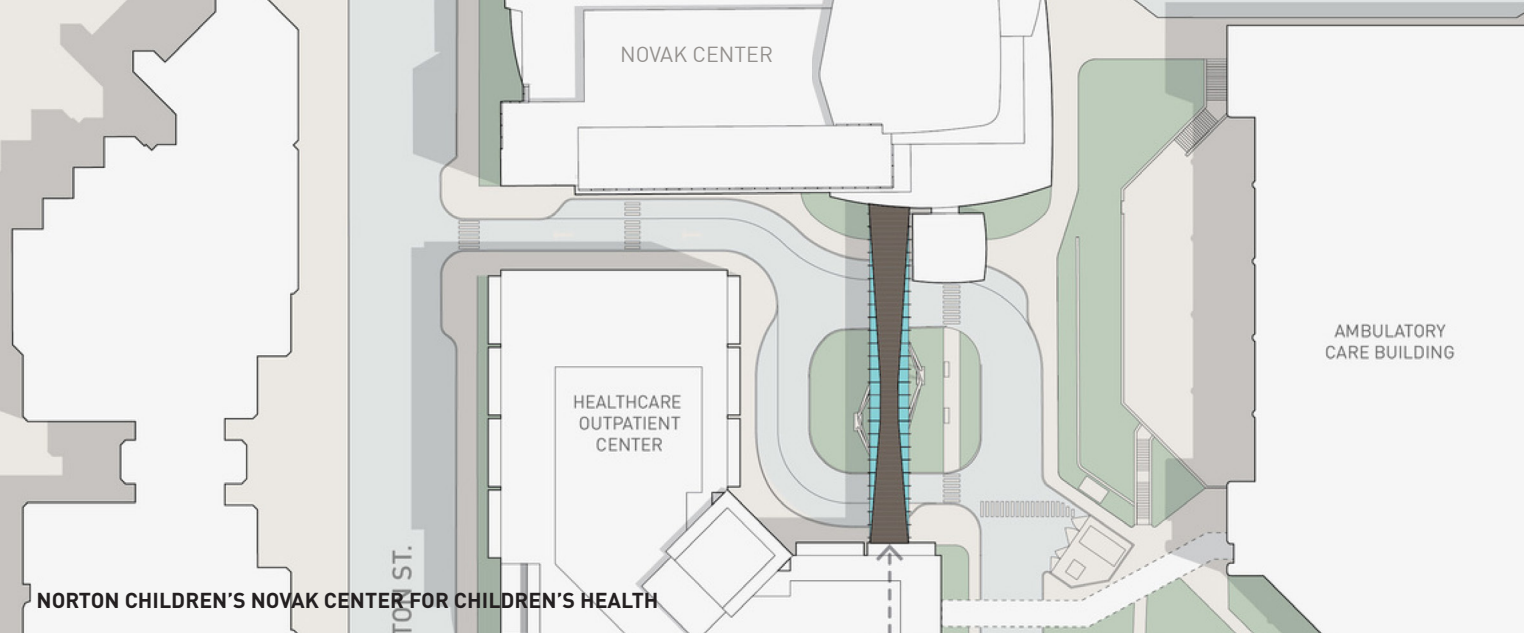
**TriHealth Bethesda North
Hospital Master Planning**
Cincinnati, Oh



**TriHealth
Cancer Master Planning**
Cincinnati, Oh



**Mercy Health
Kings Mills Hospital
Masterplanning**
Cincinnati, Oh



EXPERIENCE

Strategic Planning

TriHealth Cancer
System-wide Planning

Cincinnati Children's
Critical Care Building

UK HealthCare
Patient Care Facility

Master Planning

Cincinnati Children's
Main Campus

UPMC
Mercy Master Plan

UPMC
Presbyterian Hospital

Mercy Health
Deerfield Healthcare Campus

TriHealth
Kings Mills Hospital Campus

TriHealth
Good Samaritan

Medical Planning

UK HealthCare
NICU

Cincinnati Children's
Critical Care Building

Bugshan Investment
Saudi Arabia Clinics
& Day Surgery
Ambulatory Center

Building Planning

Cincinnati Children's
Arrival Renovation

UPMC Shadyside
Bed Tower Renovation

The Urology Group
New Surgery Center

TriHealth Group Health
Multiple MOBs

The Christ Hospital
Liberty Medical Center

University of Louisville
Physicians
Novak Center

PUBLICATIONS & PRESENTATIONS



Communities Healthy by Design
AIA Cincinnati Urban Design Salon
» Angela Mazzi

**Beyond The Pandemic:
A Long-Term View Of Healthcare
Environments' 'New Normal'**
Building Design + Construction
» Mickey LeRoy

**From Car to Exam: Ideas for
Simplifying the The Visitor
Experience**
Healthcare Symposium
» Michael Lied, Erin Schmidt, Anne Schwab

The Future of Ambulatory Care
Cleveland Clinic Patient Experience Summit
» Jason Groneck



**Home Sweet Home:
The Health Hub of the Future**
SXSW (South By South West)
» Angela Mazzi

**What are hospitals doing
to our cities?**
Healthcare Design
» Michael Lied, Angela Mazzi

**Creating a Facility Master Plan
for Pediatric Long Term Care**
Pediatric Complex Care Academy Journal:
» Angela Mazzi

Sick Cities: Is Design the Cure?
Design REALIZED Webinar
» Michael Lied, Angela Mazzi





RESPITE: HEALING GARDENS, GREEN SPACE, LIVING WALLS

Data on the well-being of healthcare staff is startling.

61% of physicians and over 50% of nurses report feelings of burnout. Burnout not only impacts quality of care, but it is causing a mass exodus from the industry. 22% of nurses say they may leave their position within the next year. According to the same study, 6.5 million lower wage healthcare workers are expected to permanently leave their jobs in the next five years, and only 1.9 million are ready to take their place.*

Opportunities to feel rejuvenated, through a connection to nature, a breath of fresh air, or a moment of calm help restore emotional and physical well-being of your professionals and staff. Such moments— strategically placed— send a powerful message to employees: You are valued.

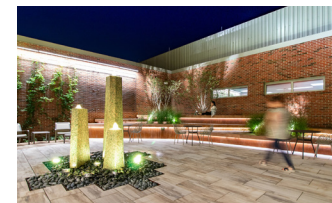
We combine research, creative partnerships, and use of augmented reality to design and implement respite spaces, gardens, living walls, walking trails and other health generating features into healthcare environments.

*Source: Sg2 2021 Workforce Analysis

HIGHLIGHTED PROJECTS



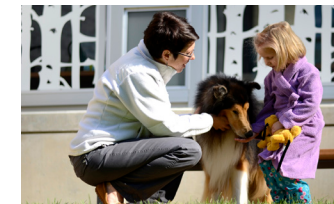
Cincinnati Children's Clinical Sciences Pavilion Rooftop Terrace
Cincinnati, Oh
Full Architectural Services



The Christ Hospital Liberty Outpatient Center Respite Outdoor Areas
Butler County, Oh
Full Architectural Services



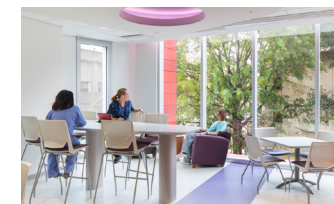
UK HealthCare Patient Care Facility Green Roof
Lexington, Ky
Full Architectural Services



Cincinnati Children's Family Pet Center
Cincinnati, Oh
Full Architectural Services



Mercy Fairfield Hospital Inpatient Unit Respite Spaces
Fairfield, Oh
Full Architectural Services



Norton Healthcare Novak Center Rooftop Terrace and Respite Spaces
Louisville, Ky
Exterior Lead Design & Medical Planning
Collaborated with EYP



UPMC PRESBYTERIAN TOWER

EXPERIENCE

Cincinnati Children's

- Clinical Sciences Pavilion
Courtyard, Rooftop Terrace,
& Research Courtyard
- Family Resource Center
& Garden
- Cancer & Blood Diseases
Institute Lounges
- Location A Concourse
- College Hill Behavioral Health
Campus Respite Spaces
- Family Pet Center

Mercy Fairfield Hospital

Inpatient Unit Respite Spaces

The Christ Hospital Health Network

Liberty Outpatient Center
Respite Outdoor Areas

UK HealthCare

Patient Care Facility Green Roof

Norton Healthcare

Novak Center**
Roof Gardens & Staff Break Spaces

Norton Children's Novak Center

Novak Center Bridge

TriHealth

- Thomas Comprehensive Cancer
Care Mary Jo Cropper Dressing
Rooms
- Finneytown Respite Spaces
- Good Sam Respite Spaces
- Montgomery Respite Spaces
- Western Ridge Respite Spaces

UPMC

Presbyterian Hospital
Lawn Oasis

**Collaborated with additional firm



CINCINNATI CHILDREN'S BEHAVIORAL HEALTH

LEARN & ADVANCE

Professional credentials in the following:



Sample of Speaking Engagements

- Swiss Center for Design & Health: Symposium on Design and Health
- American College of Healthcare Executives Annual Conference
- South by Southwest
- ASHE PDC Summit
- TEDx
- Greenbuild
- Healthcare Design Conference
- Healthcare Symposium
- EDRA Annual Conference
- HERD: Health Environments Research & Design Journal
- Cleveland Clinic Patient Experience Summit

Sample of Publication Contributions

- Healthcare Design Magazine
- The New York Times
- Advisory Board Design Showcase
- ASHE The Health Care Facilities Management Handbook
- American College of Emergency Physicians
- MedHealth Outlook



Healthcare projects have been the recipient of

NATIONAL, STATE & LOCAL DESIGN AWARDS

BD+C

INTERNATIONAL HEALTHCARE ARCHITECTS

300

TOP 300 FIRMS LIST

OVER \$5 BILLION

HEALTHCARE CONSTRUCTION



ENHANCE & EMPOWER