

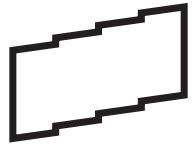


TOGETHER, WE

**ENHANCE
EXPERIENCE
& EMPOWER
PEOPLE**

THE CULTURE OF COMMUNITY DEVELOPMENT





SHARED EXPERIENCES CONNECT US, BUILD COMMUNITY, & CREATE A MEMORABLE SENSE OF PLACE.

Architecture connects people to people.

We're passionate about designing spaces where people thrive as they work, live, learn, and play.

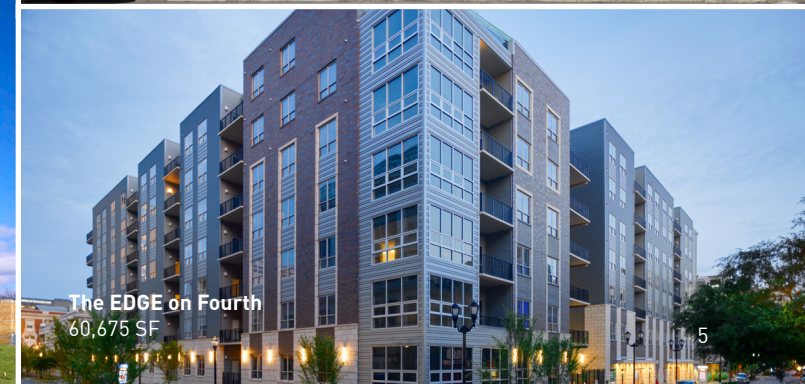
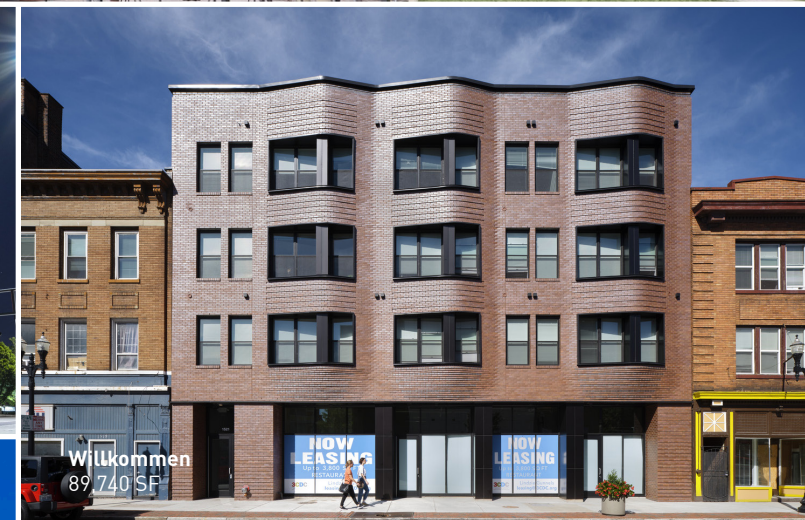
Creating equity is equally important to us. Our residential projects bring compelling elements—an unexpected view, proximity to a shared amenity, communal zones for all to enjoy— to every unit at every income level. We enrich civic and cultural spaces by designing collective experiences that embrace the diversity in our communities. The spaces we craft enhance the workplace so every employee can find ways to be productive and contribute.

MULTI-FAMILY RESIDENTIAL

Home is a powerful thing.

More than a place to sleep, our homes and neighborhoods support our identities, our relationships, our well-being, and our potential. At every scale and every income level—affordable, mixed-income, market-rate—we work with developers and community groups to better understand how our residential projects can best support the people who live inside them and the people who live around them.

We understand how people make decisions about where to live. We do more than empower residents with choices like a particular unit's framed view or proximity to a shared amenity. By listening to a community's concerns we work to craft residential projects that are seen as assets to a neighborhood.





CRANE FACTORY LOFTS



2770 OBSERVATORY

MULTI-FAMILY RESIDENTIAL EXPERIENCE

MIXED INCOME

**Pittsburgh Theological Seminary
Action Housing**
Pittsburgh, Pa

Willkommen
Cincinnati, Oh

Fifth & Dinwiddie West
Pittsburgh, Pa

Hisle Park Housing
Portsmouth, Oh

1301 Walnut
Cincinnati, Oh

Logan Commons
Cincinnati, Oh

St. Ambrose Apartments
Cincinnati, Oh

Wicklins Woods
Pittsburgh, Pa

MARKET RATE

930 Penn Ave.
Pittsburgh, Pa

947 Liberty
Pittsburgh, Pa

1010 On the Rhine
Cincinnati, Oh

2770 Observatory
Cincinnati, Oh

Anzhen Port Apartments
Anzhen, China

Ascent
Covington, Ky

Brake House Lofts
Pittsburgh, Pa

Bruno Building
Pittsburgh, Pa

Citic Guoan Apartments
Beijing, China

Crane Factory Flats
Cincinnati, Oh

Dalian Port Apartments
Dalian, China

The EDGE on 4th
Louisville, Ky

Emery Apartments
Cincinnati, Oh

Fifth Avenue School Lofts
Pittsburgh, Pa

MULTI-FAMILY RESIDENTIAL EXPERIENCE (cont'd)

MARKET RATE (cont'd)

Firstside Lofts
Pittsburgh, Pa

Frontier Lofts
Pittsburgh, Pa

HaNoBe Apartments
Cincinnati, Oh

Harbor Green
Bellevue, Ky

Lofts at Fountain Square
Cincinnati, Oh

Luna Lofts
Pittsburgh, Pa

Liberty Bank Building
Pittsburgh, Pa

Liberty Lofts
Pittsburgh, Pa

Osterling Flats
Pittsburgh, Pa

Park Place at Lytle
Cincinnati, Oh

**PNC Tower
City Club Apartments**
Cincinnati, Oh

Rosmur View Apartments
Cincinnati, Oh

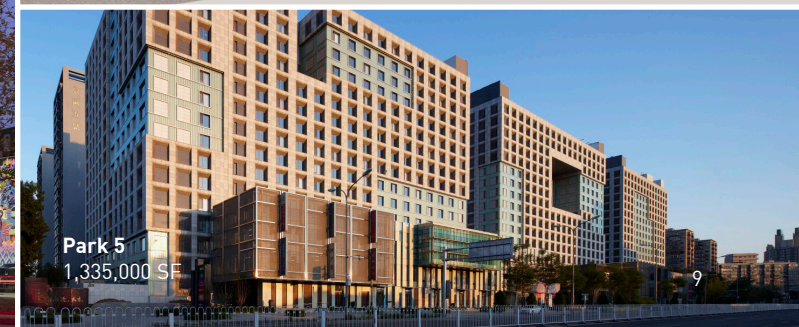
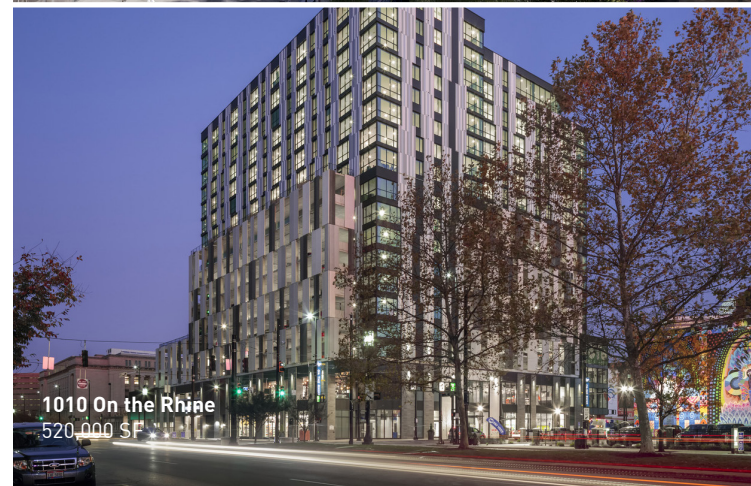
Strip Lofts
Pittsburgh, Pa

Taiyuan Tingze Port Apartment
Taiyuan, China

Vanke Park 5
Beijing, China

MIXED-USE

Vibrant neighborhoods bring people together. Diversity in all its forms—cultural, economic, generational, and experiential—brings richness to our neighborhoods. The ability to be within walking distance of a variety of amenities like museums, parks, restaurants, shops, and our workplaces is what makes city living so inviting. Whether trading nods with a neighbor at the gym or crowding around an outdoor café table with new friends, the urban environment seeds spontaneous social collisions. The spaces we design help make them memorable.





THE COLOR BUILDING



DIGITAL FUTURES COMPLEX

MIXED-USE EXPERIENCE

1010 On the Rhine
Cincinnati, Oh

Color Building
Cincinnati, Oh

HaNoBe Apartments
Cincinnati, Oh

Fifth & Dinwiddie East
Pittsburgh, Pa

Fifth & Dinwiddie West
Pittsburgh, Pa

Firenze Sales Hall
Beijing, China

Infinity Exhibition Hall
Beijing, China

Ocean City Retail Complex
Chongqing, China

Purple Jade Mountain Resort
Jilin Province, China

St. Bernard Square
Cincinnati, Oh

Tomorrow City Exhibition Hall
Shenyang, China

**Uptown Gateway
& Digital Futures Complex**
Cincinnati, Oh

**Uptown MLK Corridor
Master Plan**
Cincinnati, Oh

Vanke Emerald Pavilion
Tianjin, China

Vanke Golizhuang
Beijing, China

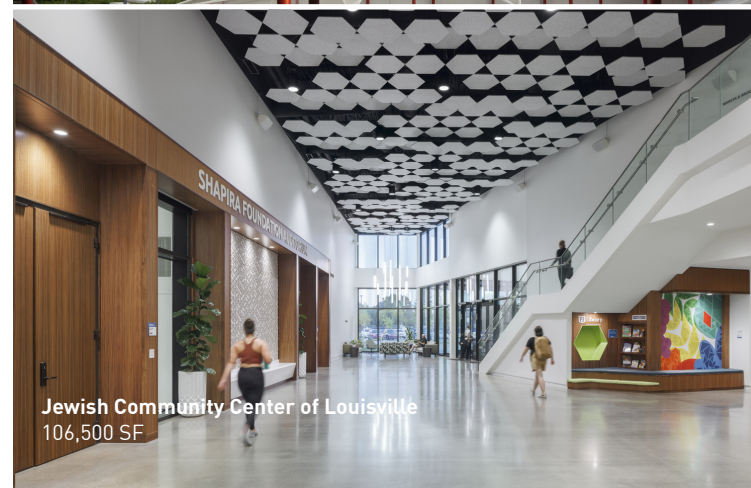
Xihua Master Plan
Tianjin, China

Wetland Community Center
Tianjin, China

CIVIC, CULTURE, & NON-PROFIT

For non-profit, cultural, social service, and other community organizations with precious resources, new space may be a once-in-a-generation undertaking. Creating memorable experiences that last a lifetime starts with good stewardship of assets carefully deployed to advance their mission.

Our expertise helps non-profits craft capital campaigns and navigate available tax credit tools so they can create the space they need to bring people together. Fostering a thirst for learning or a culture of service means looking at architecture beyond buildings, because positively impacting people is the most important thing we do.





TREE PITTSBURGH

CIVIC, CULTURE, NON-PROFIT EXPERIENCE

The 8th Street Park
Pittsburgh, Pa

Baker Hunt Master Plan
Covington, Ky

Camp Joy Master Plan
Cincinnati, Oh

Changchun Community Sports Complex
ChangChun, China

Cincinnati Museum Center
Cincinnati, Oh

Contemporary Craft
Pittsburgh, Pa

Gateway Light Rail Station
Pittsburgh, Pa

Jewish Community Center of Louisville
Louisville, Ky

Jiugongshan Memorial Bridge
Jiugongshan, China

Esther Marie Hatton Center for Women
Cincinnati, Oh

PNC Legacy Project
Pittsburgh, Pa

SPCA Adoption Center
Cincinnati, Oh

Ronald McDonald House
Cincinnati, Oh

Ronald McDonald House
Dayton, Oh

Ronald McDonald House
Lexington, Ky

Rushville Community Center
Rushville, In

St. Aloysius Behavioral Health
Cincinnati, Oh

St. Vincent de Paul
Cincinnati, Oh

Steel City Squash
Pittsburgh, Pa

Tree Pittsburgh
Pittsburgh, Pa

United Way of Greater Cincinnati
Cincinnati, Oh

YWCA Domestic Violence Shelter
Cincinnati, Oh



RONALD MCDONALD HOUSE OF GREATER CINCINNATI

LIBRARIES

Libraries are for everyone.

Our libraries anticipate diverse uses where people feel welcome and are in control of their environment. Offering a range of spaces, our libraries empower users to choose from quiet places for focused work, spaces for casual exploration, or places to connect and collaborate with others.

Our libraries bridge the digital divide, providing access to everything from the internet to advanced makerspace technology. We understand that a library's needs change with its community and so we develop adaptable library designs that can evolve with time and the people using them.



Carnegie Library of Pittsburgh, East Liberty
42,000 SF



Cincinnati & Hamilton County Public Library, Deer Park
25,000 SF



Carnegie Library of Pittsburgh, Beechview
8,000 SF



Carnegie Library of Pittsburgh, Knoxville
9,800 SF



Carnegie Mellon University, Sorrells Library
16,000 SF



CARNEGIE LIBRARY OF PITTSBURGH, BEECHVIEW

LIBRARY EXPERIENCE

Baldwin Borough Public Library
Pittsburgh, Pa

The Braddock Carnegie Library
Pittsburgh, Pa

Carnegie Library of Pittsburgh
Pittsburgh, Pa

- **Beechview**
- **East Liberty**
- **Knoxville**
- **Lawrenceville**
- **Main Library**
- **Library of Accessible Media for Pennsylvanians (LAMP)**

Cincinnati & Hamilton County Public Library
Cincinnati, Oh

- **Delhi**
- **Deer Park**
- **Groesbeck**
- **Madisonville**
- **Main Library**
- **Symmes**

Carnegie Mellon University Sorrells Library
Pittsburgh, Pa

The Ohio State University Cartoon Research Library
Columbus, Oh

Penn Hills Library
Pittsburgh, Pa

University of Pittsburgh Hillman Library
Pittsburgh, Pa

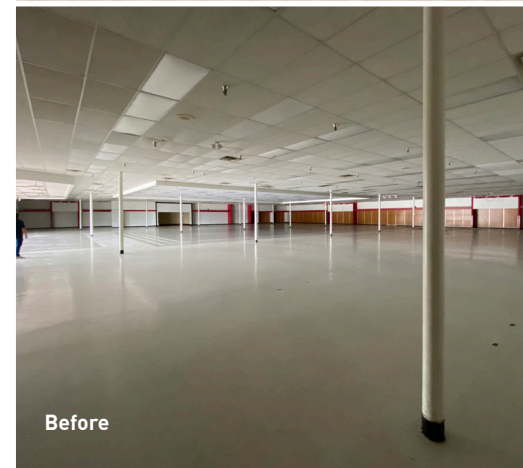
Western Allegheny Community Library
Pittsburgh, Pa



REPURPOSING RETAIL

From razed supermarkets to abandoned big box stores to empty strip mall storefronts, the evidence of a changing retail environment is all around us, impacting the landscape of our neighborhoods.

These empty sites pose challenges for communities and developers who wish to give them new life and purpose. Designed for a retail experience, these ghost sites have large open plans and usually sit on expansive parking, which separate them and their patrons from the street. The nature of these buildings and sites offer tremendous potential for re-invention. We work with clients and communities to re-imagine what remains and find opportunities to design new destinations.



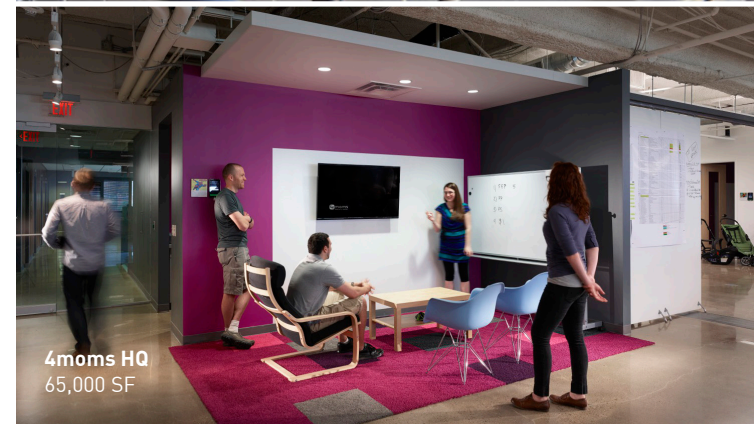
CREATIVE WORKPLACE

Space shapes the organizational health of a company. We design workplaces that enhance our clients' unique cultures and empower transformational growth.

Every generation redefines their "lifestyle of work" by introducing different values and new priorities into the workplace. We anticipate trends, but also understand what is timeless—daylight, flexibility, shared amenities, spaces for both collaboration and focused work, and giving employees choices about how they can best work and contribute. Design that embraces the different ways people like to work helps attract and retain talented people who engage around your culture and your brand.



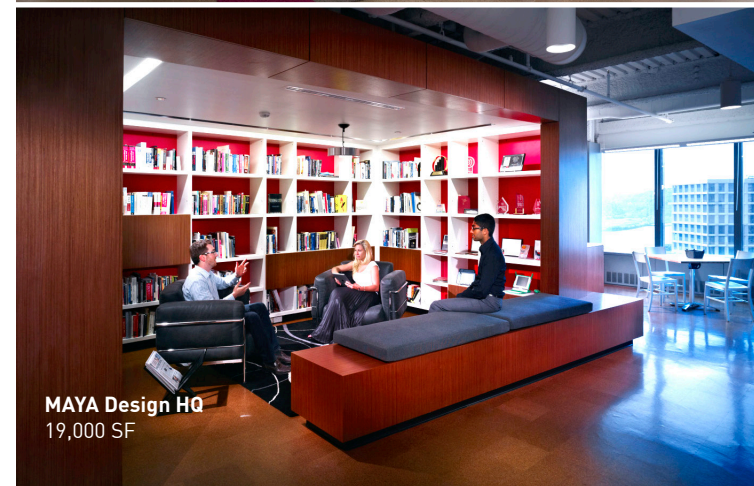
The Roundhouse at Hazelwood Green
25,000 SF



4moms HQ
65,000 SF



Everything But the House
12,000 SF



MAYA Design HQ
19,000 SF



Cincinnati Children's Clinical Sciences Pavilion
458,000 SF



TRIHEALTH HEADQUARTERS



4MOMS

CREATIVE WORKPLACE EXPERIENCE

3CDC

The Foundry

4moms HQ

Pittsburgh, Pa

Cincinnati Children's Offices Multiple Locations

Cincinnati, Oh

Beijing Hua Yuan Group Zoo Tower

Beijing, China

ByteDance Workplace Renovation

Beijing, China

Carnegie Mellon University Marketing & Communications

Pittsburgh, Pa

Dayton Superior Innovation Center

Dayton, Oh

Everything But The House

Cincinnati, Oh

Expedient Offices

Multiple Locations Nationwide

Gatesman Ad Agency

Pittsburgh, Pa

Hillrom

Batesville, In

Hitcents

Bowling Green, Ky

MAYA Design HQ

Pittsburgh, Pa

OneValley, The Roundhouse at Hazelwood Green

Pittsburgh, Pa

Pittsburgh Foundation

Pittsburgh, Pa

RK Mellon Foundation

Pittsburgh, Pa

Sentrilock

Cincinnati, Oh

Terrex, Messer, & University of Cincinnati Digital Futures

Cincinnati, Oh

Thompson Hine

Cincinnati, Oh

TriHealth HQ

Cincinnati, Oh

Vanke Research Base

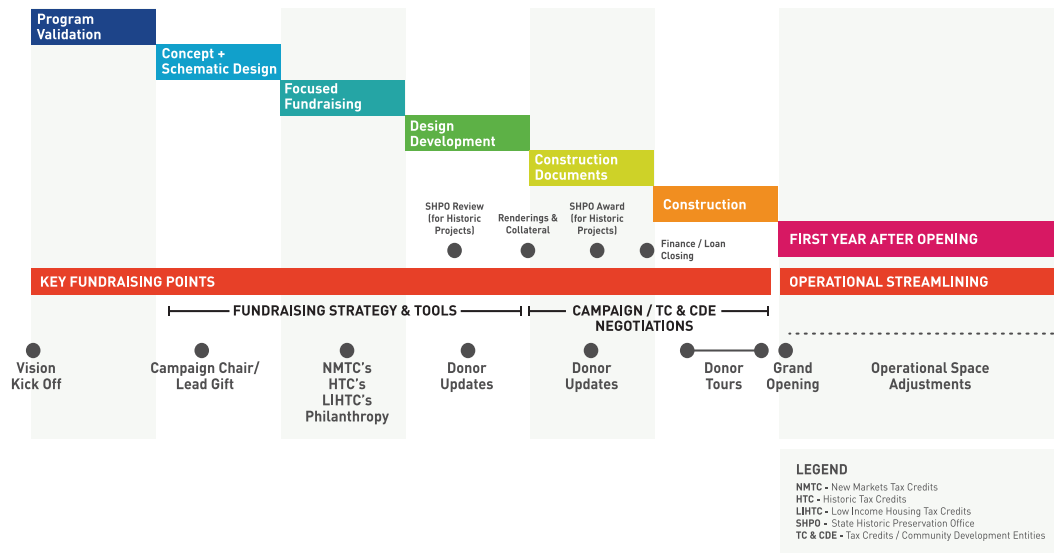
Beijing, China

FUNDRAISING

We understand how hard our clients work to raise every dollar. We help you spend your design dollars wisely in ways that help propel your mission, teams, and clients forward.

We assist fundraising efforts with visual and narrative support to engage your board, potential donors, and the community. Through renderings, technology, and messaging, we help clients set themselves up for success as they embark on capital campaigns. From developing the story that captures the essence of the project to using Virtual Reality (VR) goggles to put donors and stakeholders in the space, we will use our tools to help you build excitement before construction starts.

Funding mechanisms like New Markets Tax Credits, Low Income Housing Tax Credits, and Historic Tax Credits can be catalysts for financial lending or capital campaigns. We understand the requirements and applicability of tax credit funding tools and how they will impact your project's design as it moves from wish list to reality.



NAMING OPPORTUNITIES



DEVELOP NARRATIVES



VISUALS



ENGAGE DONORS



TECHNOLOGY



Check out our Sustainability Action Plan!

SUSTAINABILITY

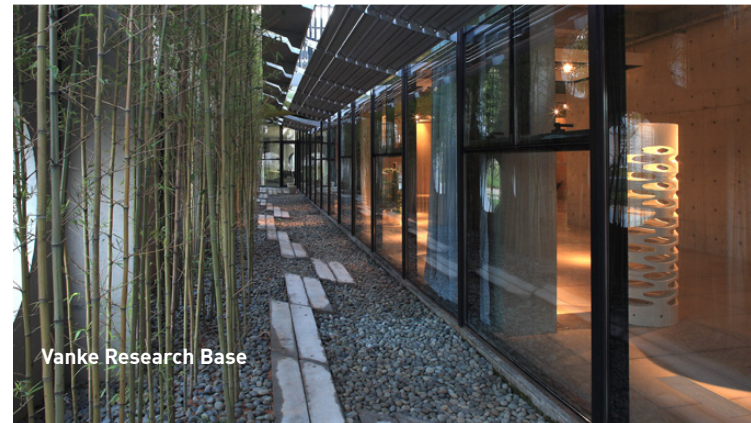
People are at their best in healthy and supportive environments.

We work with our clients to create strategic and visionary sustainability goals that align with the project budget and schedule. As part of our commitment to reduce carbon and eliminate waste, we strive for site-specific, regional approaches to design informed by research, rigorous analysis, and local conditions. We perform climate analysis and opportunity assessment during Concept or Schematic Design phases and use energy modeling early in the process to measure predicted energy use (pEUI). Our in-house experts in Passive House, WELL, Fitwel, and LEED certification work closely with clients to make sustainability, wellness, and resilience decisions early when they can have the most impact.

As a member of the Cincinnati 2030 District, we are committed to reducing the energy use, water consumption, and transportation emissions of our office 50% by the year 2030. As signatories to the American Institute of Architects' 2030 Commitment, GBBN is acting on the AIA's challenge to deliver design excellence through healthy, efficient, and resilient spaces, for our clients and ourselves.



GBBN Cincinnati



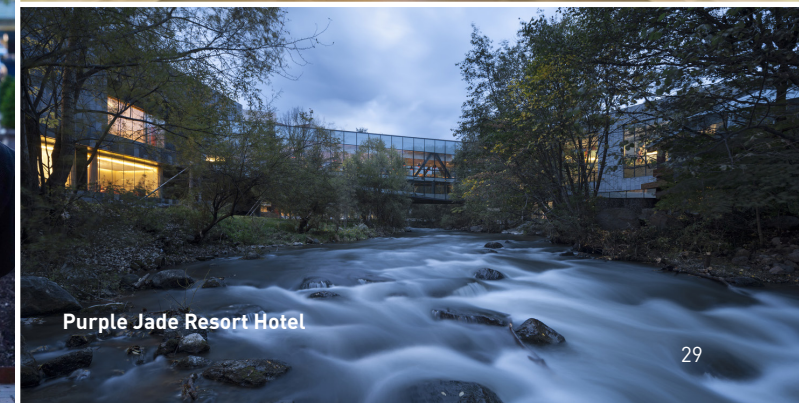
Vanke Research Base



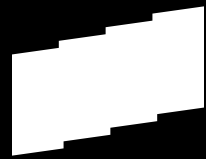
Firenze Sales Hall



8th Street Park & Water Cube



Purple Jade Resort Hotel



**POSITIVELY
IMPACTING
PEOPLE, IS THE
MOST IMPORTANT
THING WE DO.**



Chad Burke

cburke@gbbn.com
513.241.8700

Amanda Markovic

amarkovic@gbbn.com
412.345.5005